

NOTES:  
 ALL LIGHTING TO BE DIMMABLE  
 ALL DECORATIVE LIGHTS TO BE "WARM WHITE"  
 ALL TASK LIGHTING TO BE IN "DAYLIGHT"



QTY: 2  
 100MM X 100MM  
 RECTANGULAR BLACK LINEAR LIGHT  
 WITH DIFFUSER.  
 PLEASE REFER TO CAD PLAN FOR  
 LENGTH SIZES (TASK LIGHT)



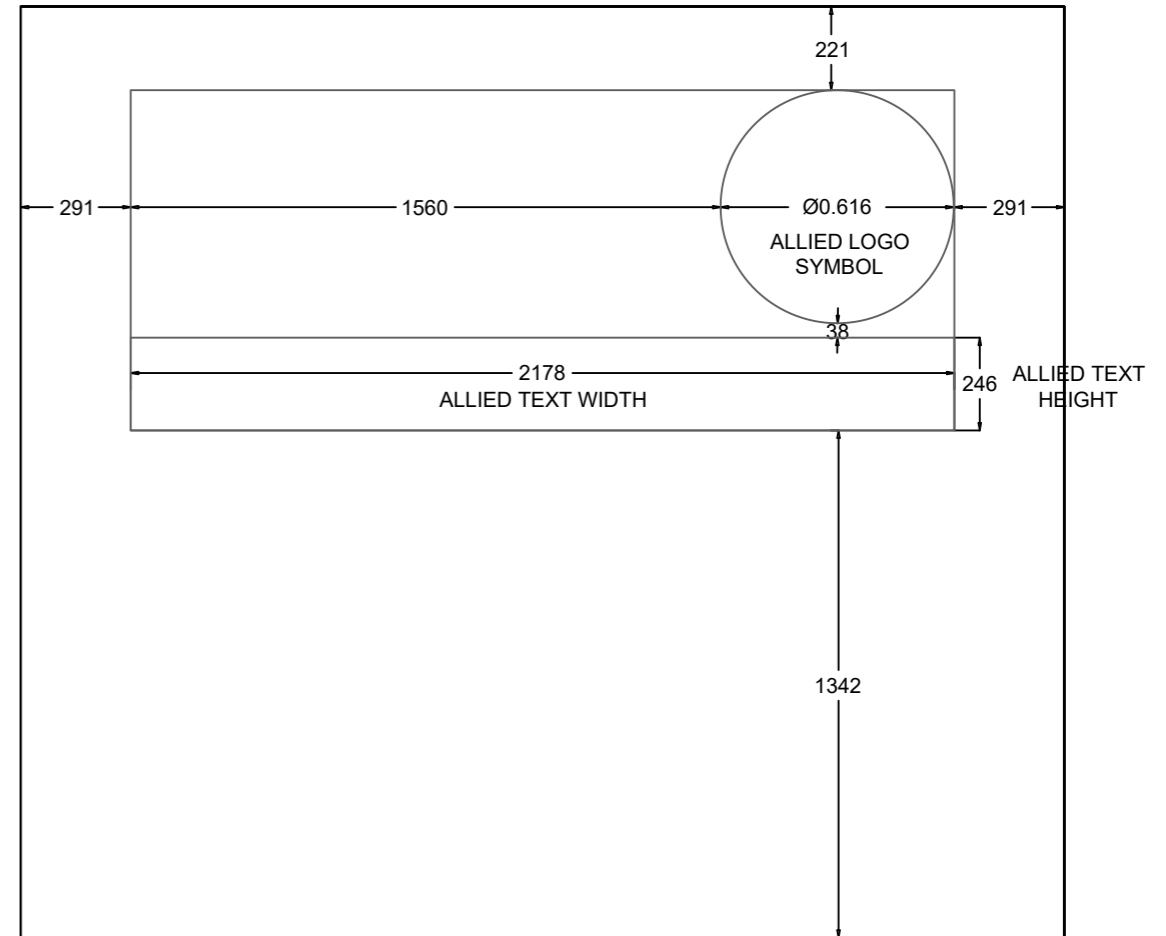
QTY: 1  
 TRACK LIGHTING IN BLACK FINISH  
 PLEASE REFER TO CAD PLAN FOR  
 LENGTH SIZES AND NUMBER OF SPOTS  
 REQUIRED (TASK LIGHTING)



QTY: 18  
 ADJUSTABLE DOUBLE  
 SPOT LIGHTS IN BLACK  
 FINISH  
 (TASK LIGHTING)

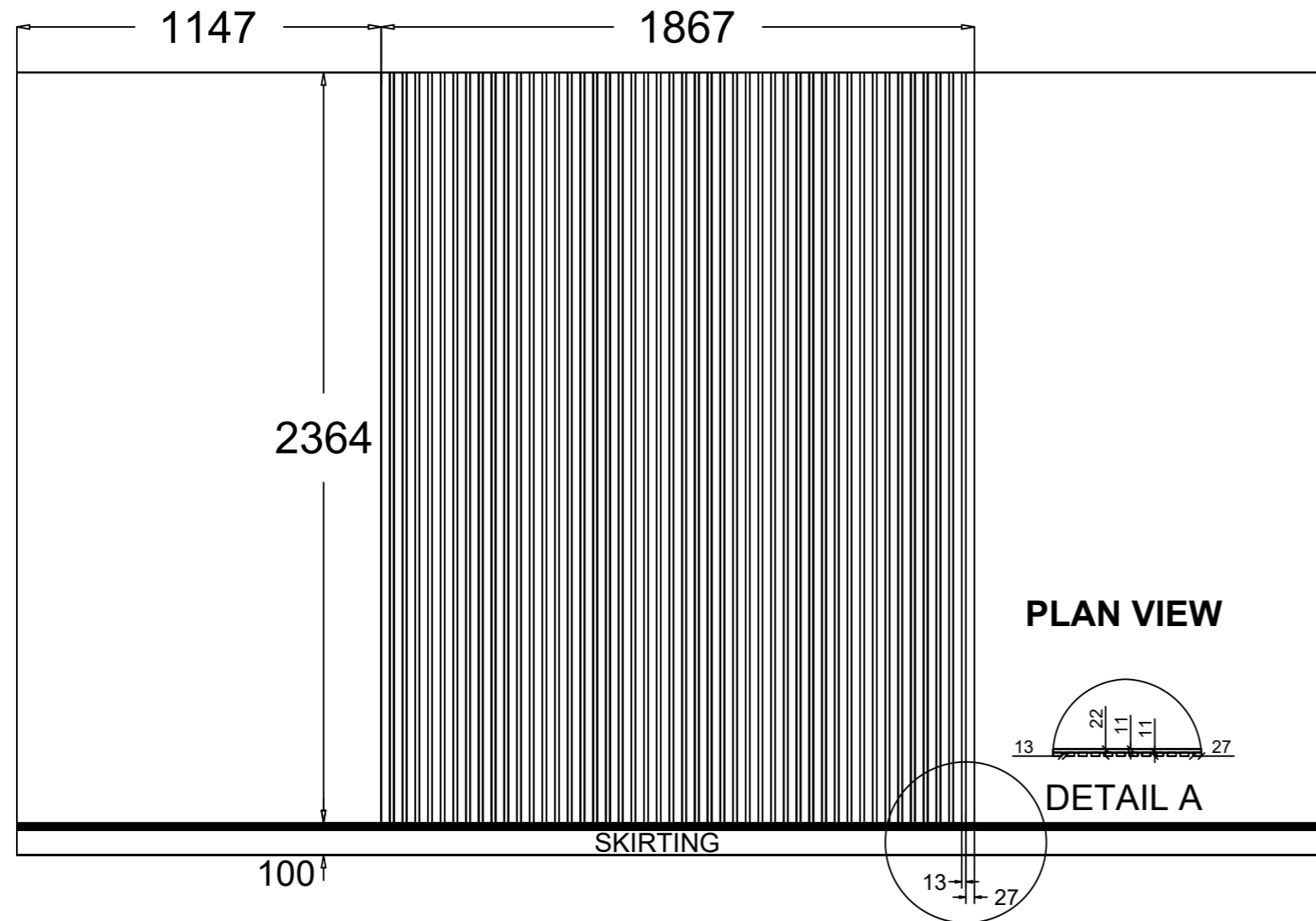


QTY: 1  
 UNDER THE BELL  
 PENDANT BY MUUTO  
 IN BLACK FINISH,  
 SIZE:55CM  
 (DECORATIVE LIGHTING)



**PLAN VIEW**

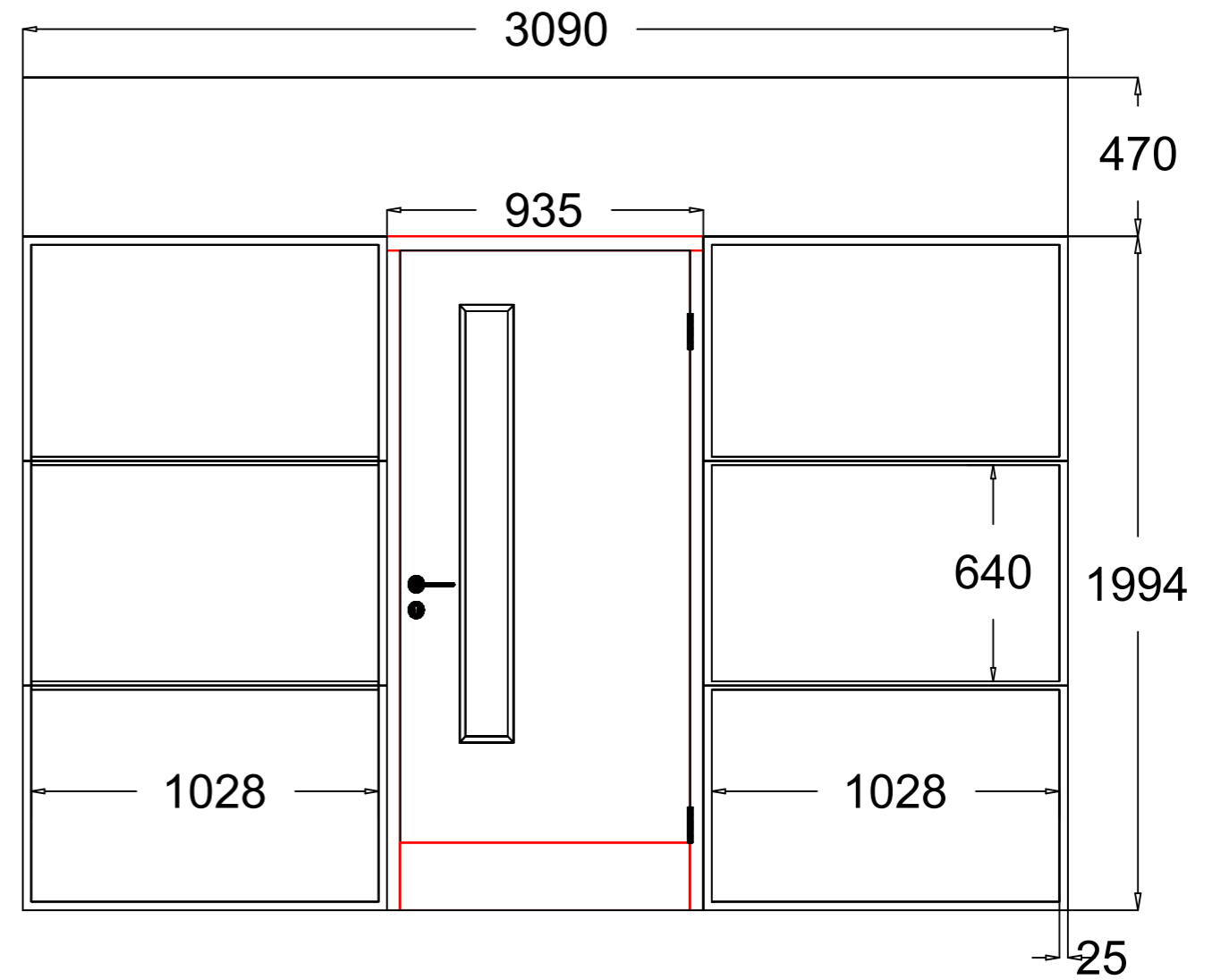


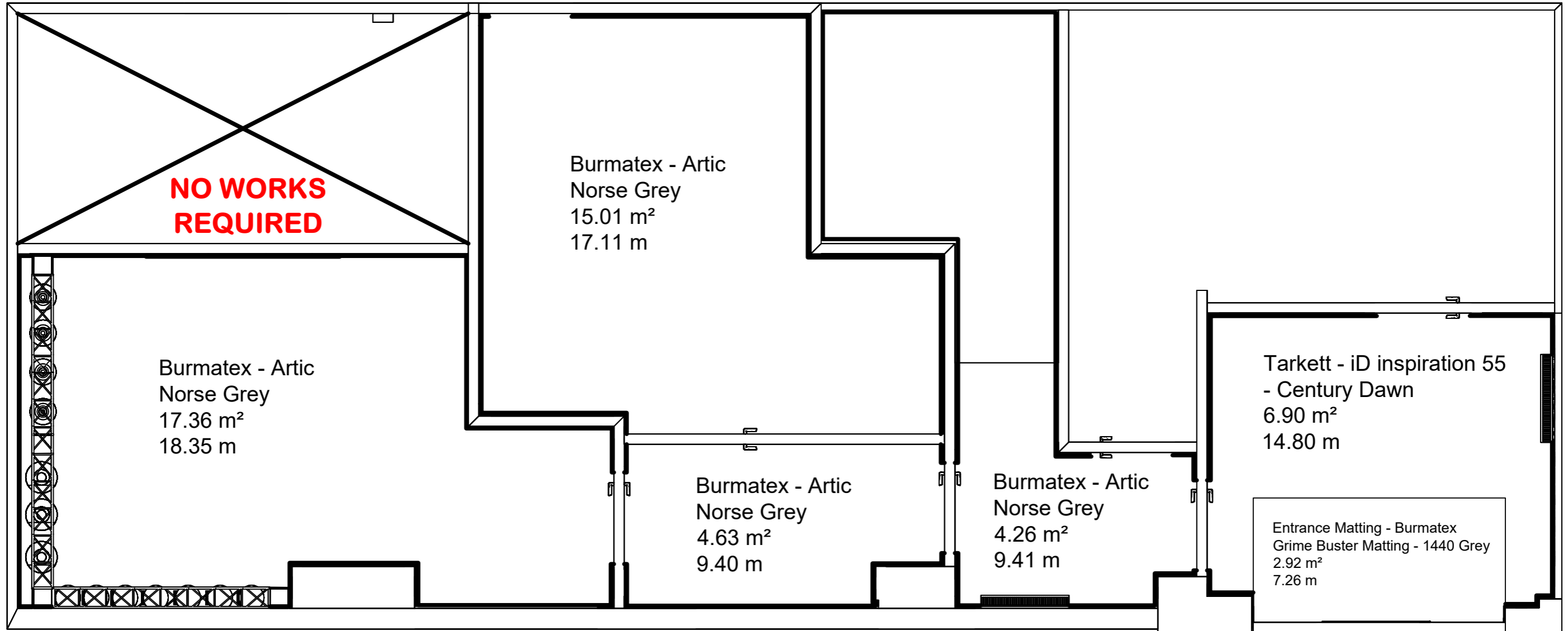


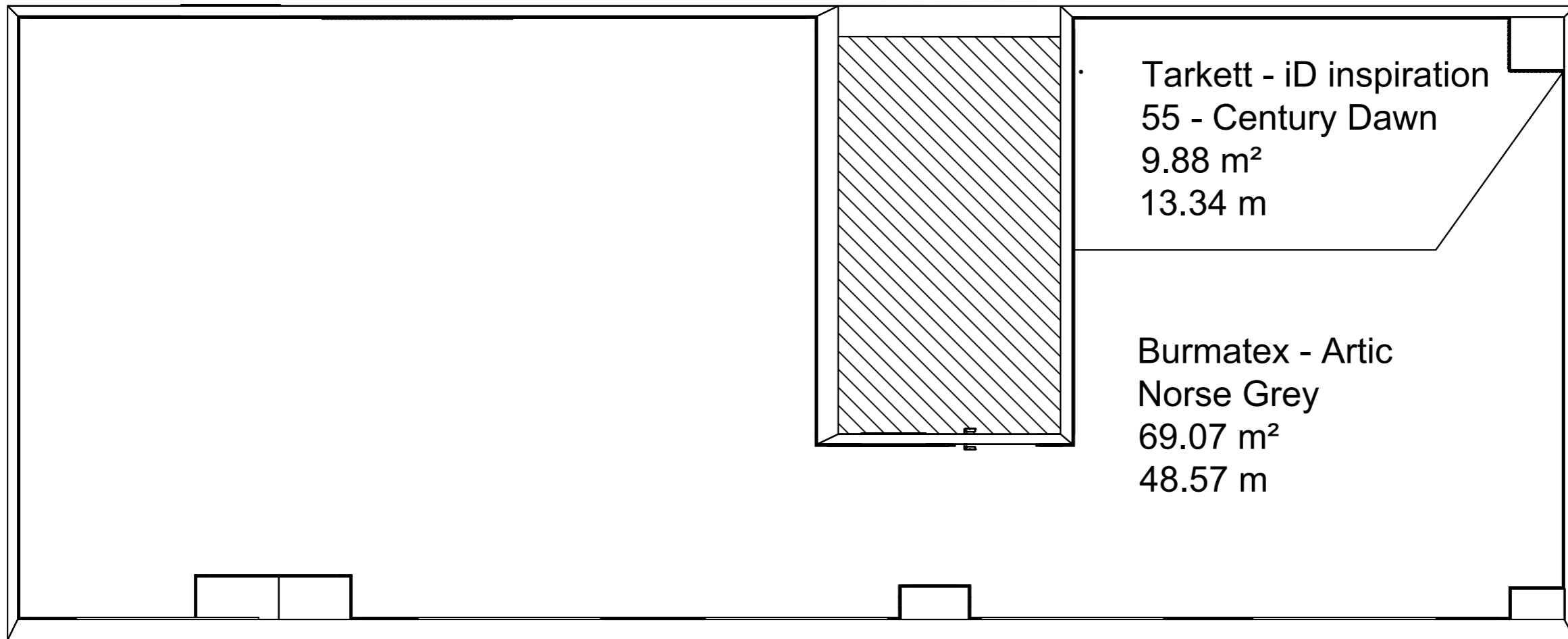
**CONCEPT IMAGE**

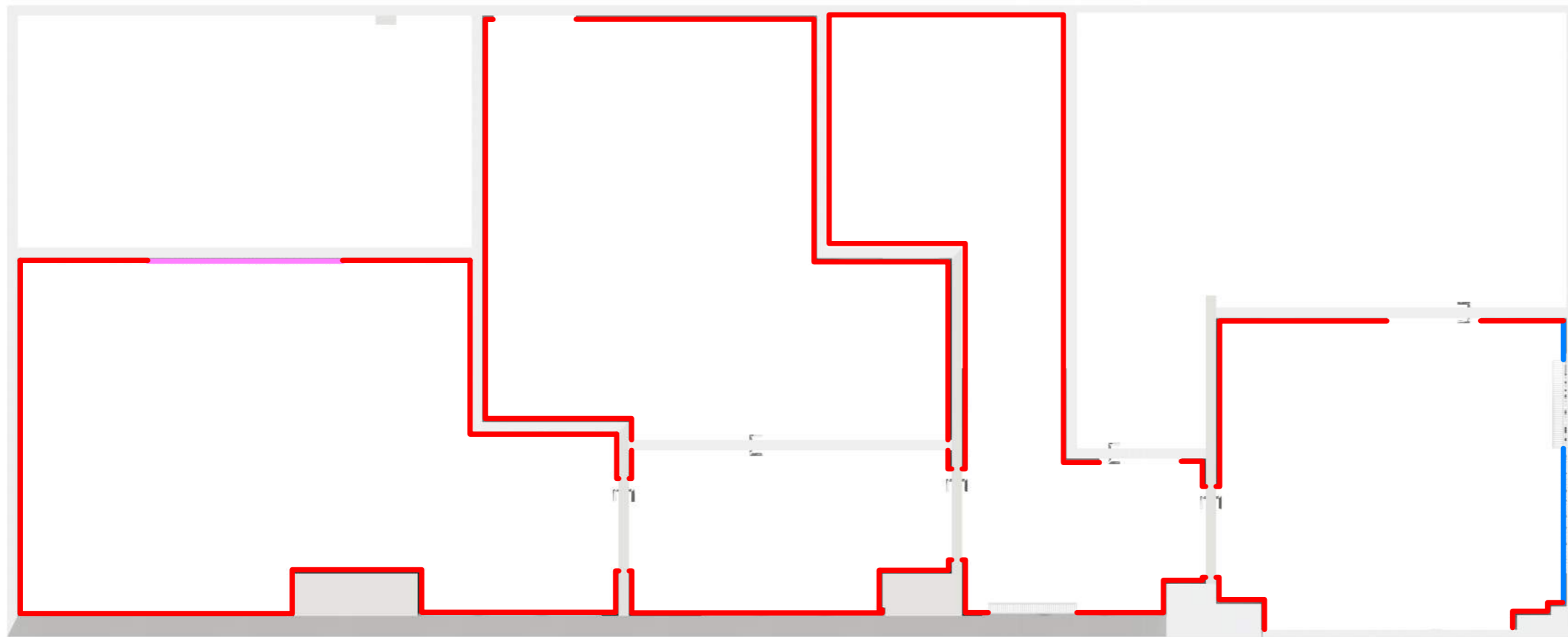


**CONCEPT IMAGE**









- SLAT WALL - DETAIL SEPERATE
- GENERAL PAINT CROWN PAINT C2560F GREY PUTTY
- GENERAL PAINT CROWN PAINT F1250E

NOTES:

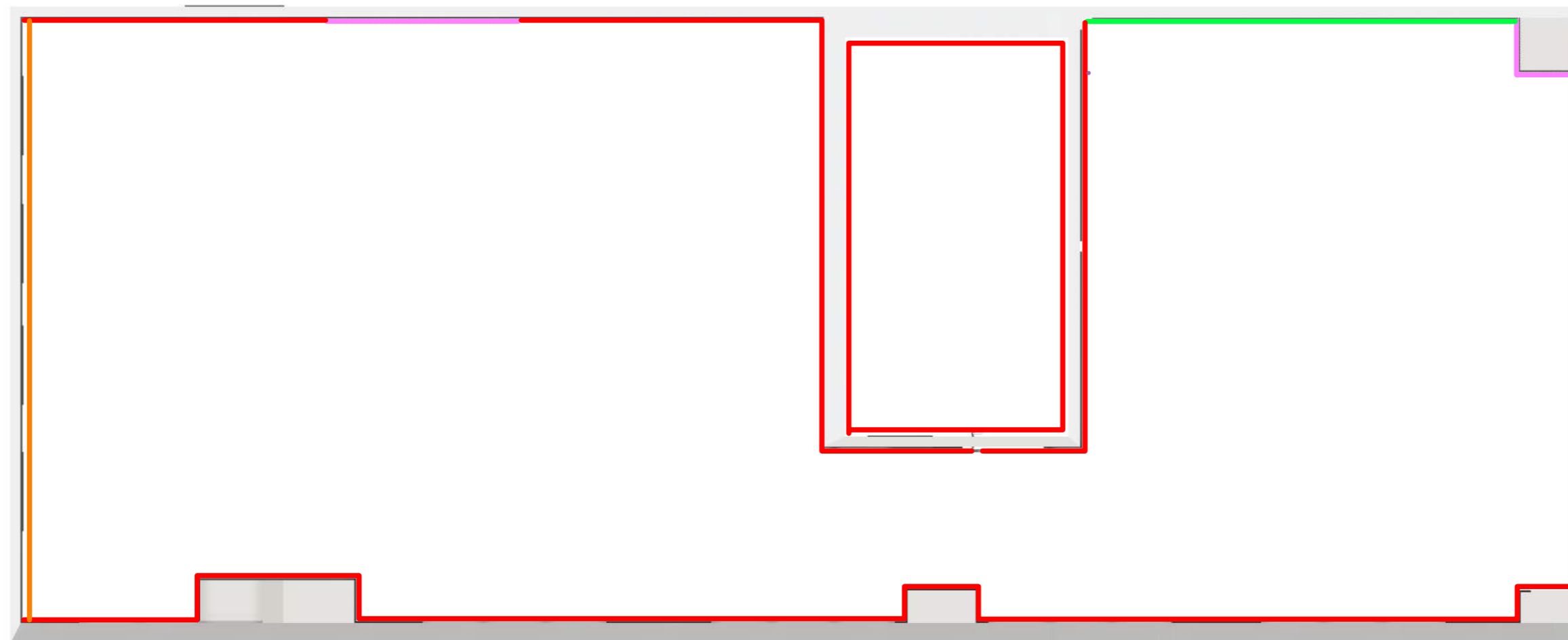
- \* WALL PAINT FINISH TO BE IN CROWN "CLEAN EXTREME SCRUBBABLE MATT"
- \* WOODWORK PAINT (SKIRTING & ARCHITRAVES) FINISH TO BE IN CROWN "STANDARD BLACK" FAST FLOW SATIN
- \*INTERNAL WINDOW FRAMES TO BE FINISHED IN BLACK - CROWN RECOMENDATION TO SUGAR SOAP FIRST THEN USE CROWN TRADE PX3 SOLVENT BASED PRIMER THEN FINISH WITH FAST FLOW SATIN IN STANDARD BLACK.

Allied Insulators  
Ground Floor - Paint Spec

Date 27/05/2025  
Designer Joshua Turner / Neil Robinson  
Scale 1:50 A3

Bullock & Bosson / BFM Staffs  
Tel: B&B: 01782 747222 / BFM: 01782 818567  
Fax: N/A  
[www.bullockandbosson.com](http://www.bullockandbosson.com) / [www.bfmstaffsLtd.co.uk](http://www.bfmstaffsLtd.co.uk)

This drawing is protected under copyright. At no time must any part of this drawing be reproduced and electronically processed, duplicated or distributed in anyway (print, photocopy or any other procedure) without the written permission of the author.



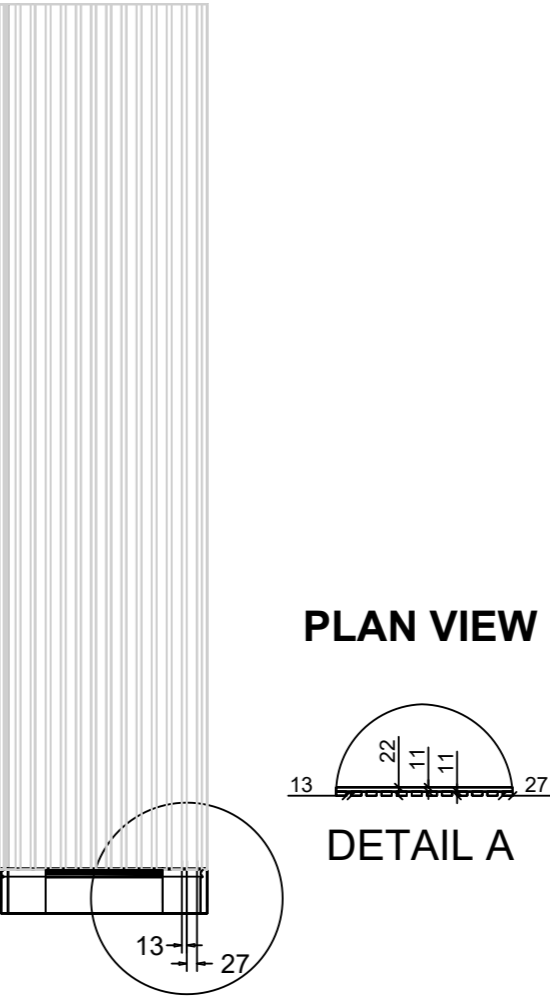
- SLAT WALL - DETAIL SEPERATE
- GENERAL PAINT CROWN PAINT C2560F GREY PUTTY
- GENERAL PAINT CROWN PAINT F1250E
- FEATURE WALL IMPASTO WOOD 4856 WALLPAPER TEKTURA 68 CM WIDE SOLD BY THE ROLL
- FEATURE WALL CONCRETE W2CR02 WALLPAPER TEKTURA 137CM WIDE SOLD BY THE ROLL

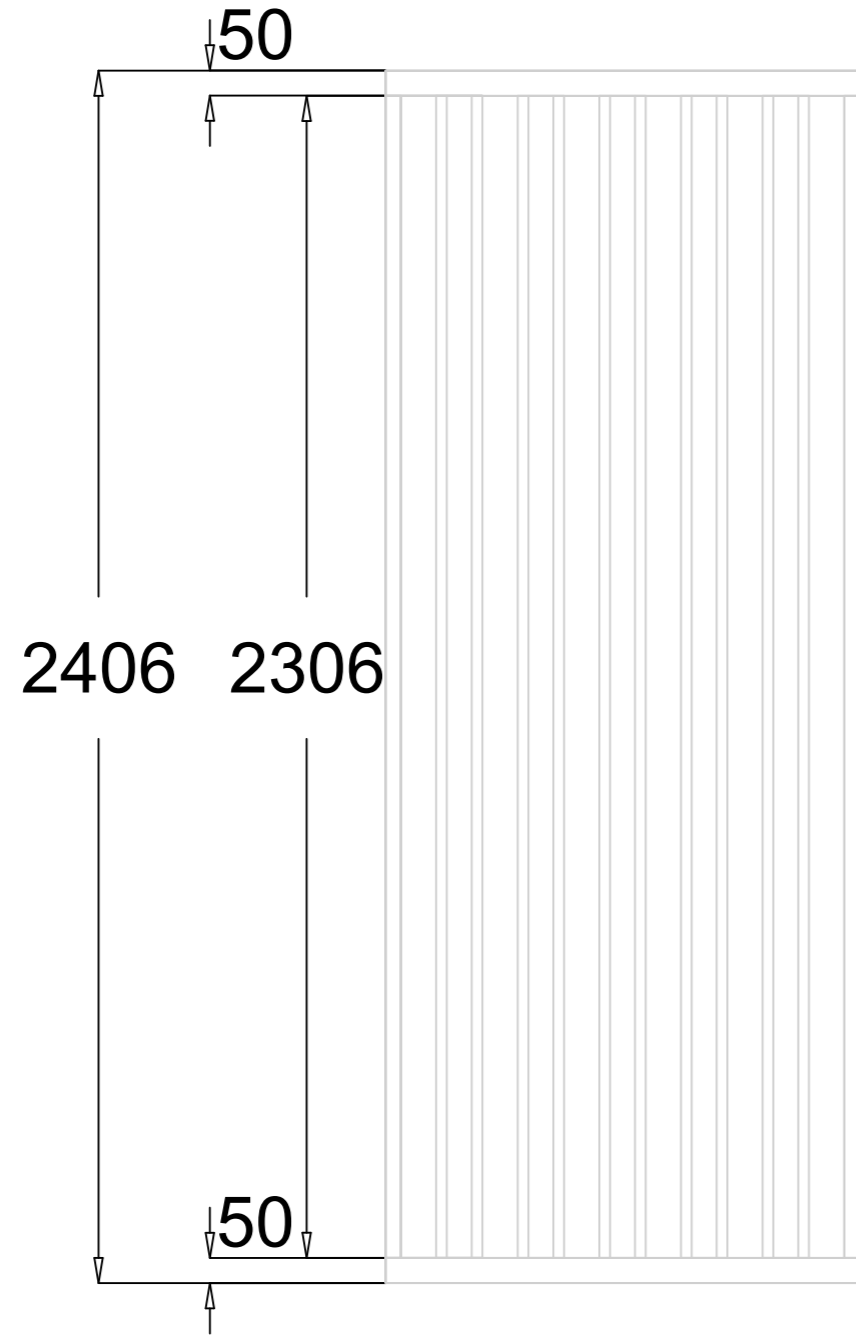
NOTES:

- \* WALL PAINT FINISH TO BE IN CROWN "CLEAN EXTREME SCRUBBABLE MATT"
- \* WOODWORK PAINT (SKIRTING & ARCHITRAVES) FINISH TO BE IN CROWN "STANDARD BLACK" FAST FLOW SATIN
- \*INTERNAL WINDOW FRAMES TO BE FINISHED IN BLACK - CROWN RECOMENDATION TO SUGAR SOAP FIRST THEN USE CROWN TRADE PX3 SOLVENT BASED PRIMER THEN FINISH WITH FAST FLOW SATIN IN STANDARD BLACK.

**SLAT WALL UPSTAIRS DETAIL 2**

**CONCEPT IMAGE**

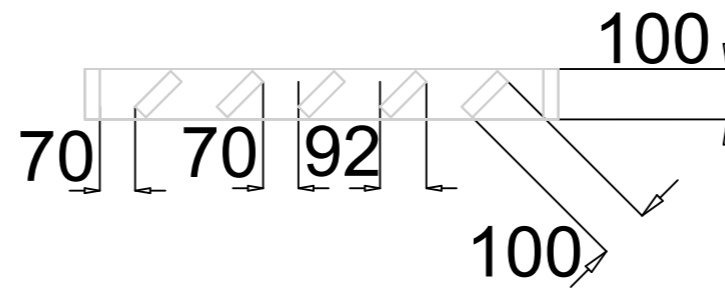




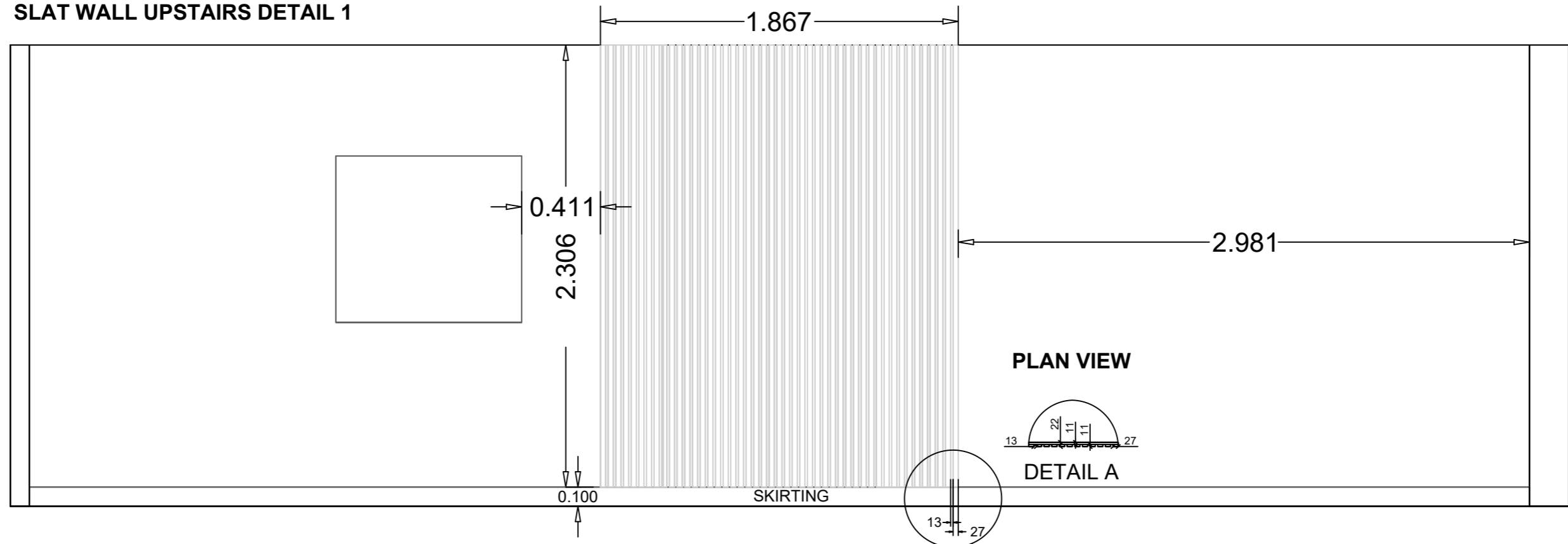
**CONCEPT IMAGE**



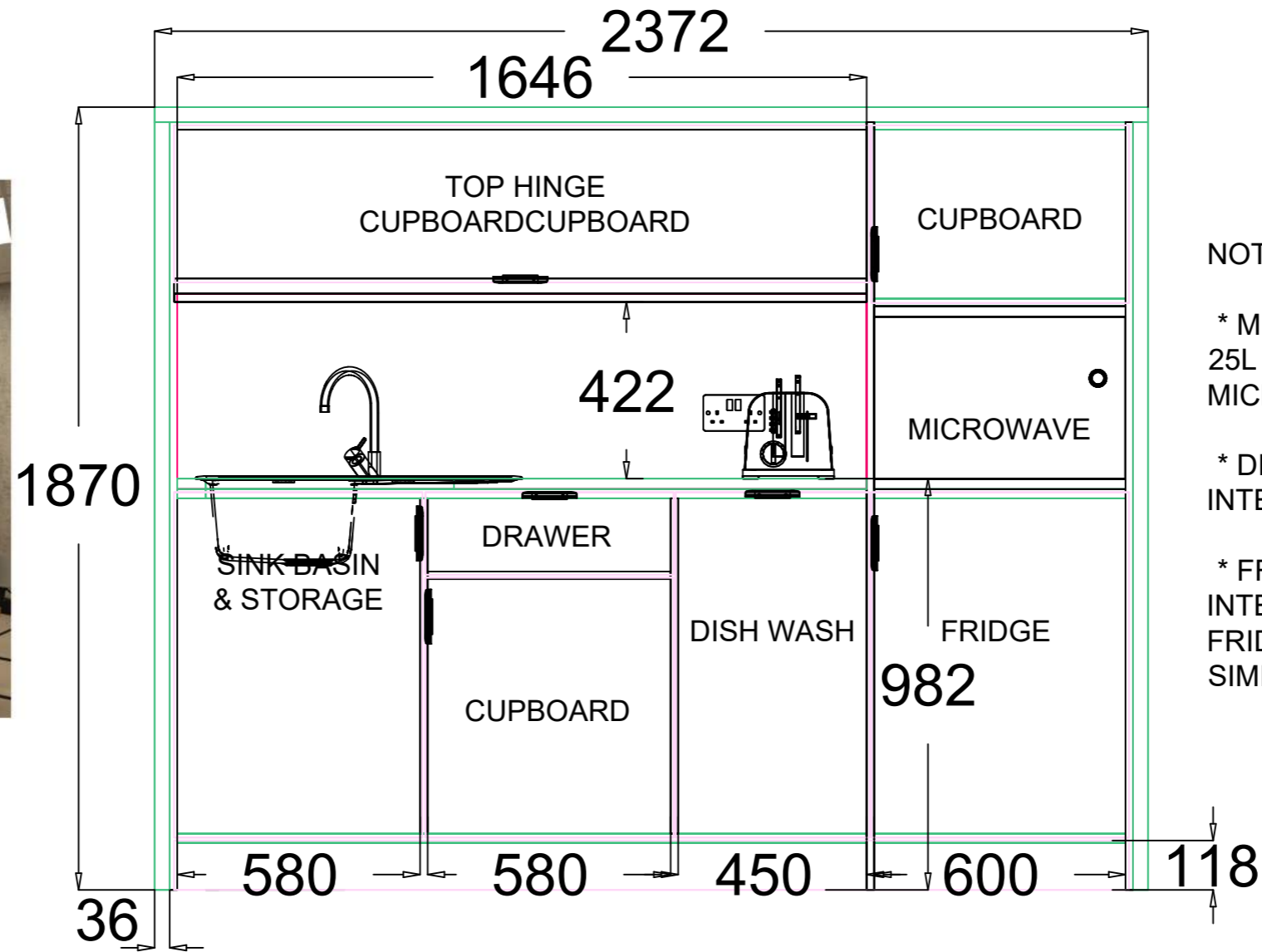
**TOP VIEW**



# SLAT WALL UPSTAIRS DETAIL 1



# CONCEPT IMAGE

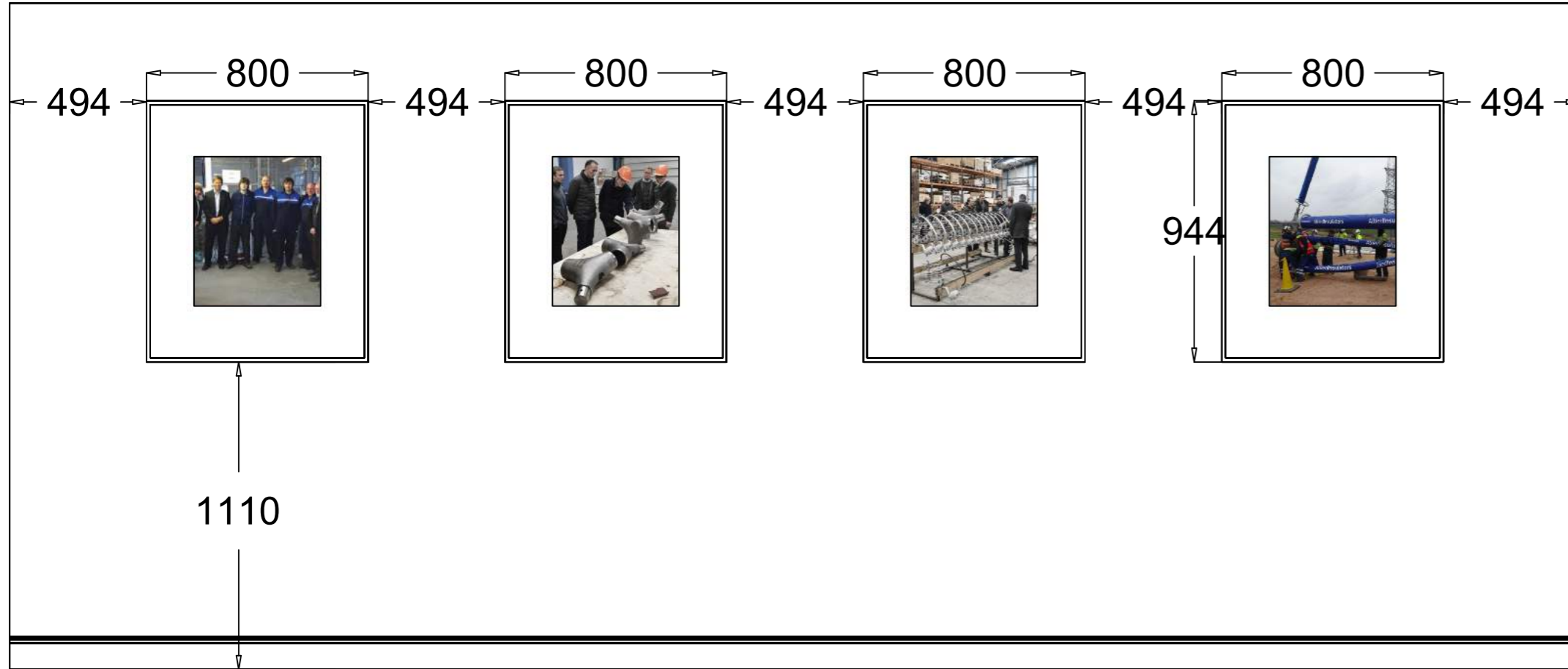


## NOTES:

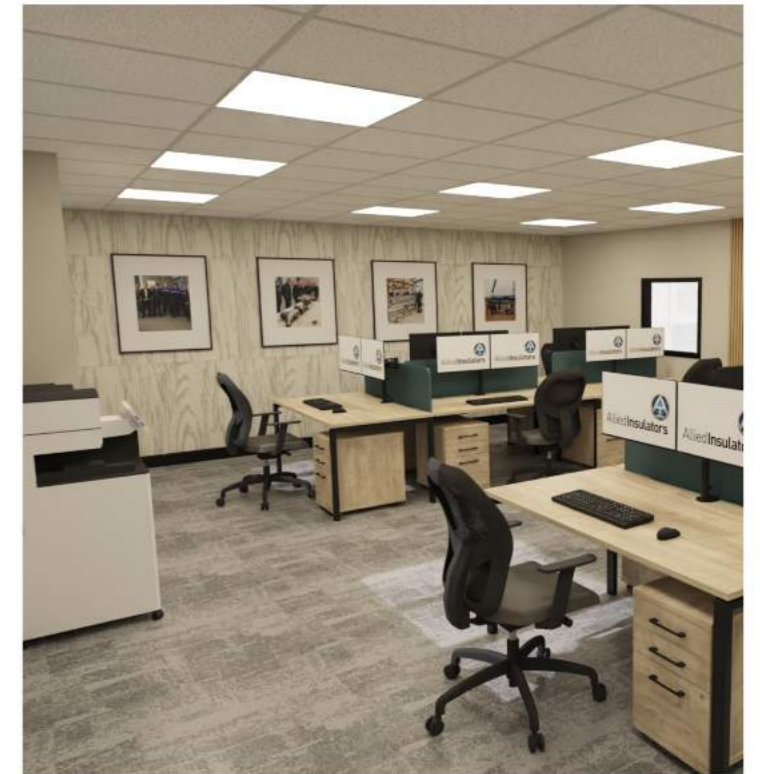
\* MICROWAVES TO BE ELECTRIQ 25L 00W BUILT IN DIGITAL MICROWAVE IN BLACK.

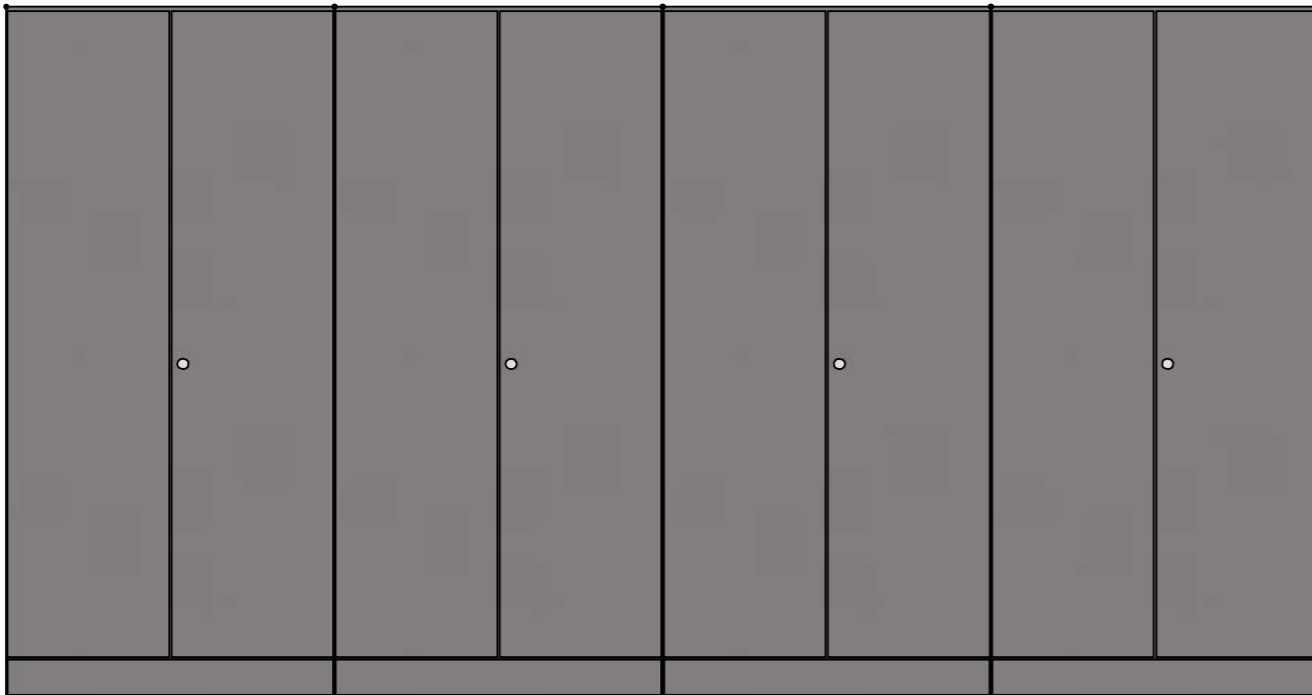
\* DISHWASHER TO BE CDA 45CM INTEGRATED DISHWASHER

\* FRIDGE TO BE CDA FW254- INTEGRATED UNDECOUNTER FRIDGE WITH ICEBOX OR SIMILAR.



**CONCEPT IMAGE**





Allied Insulators

FF - CUPBOARD SPRAY / WRAP SPEC

Date 27/05/2025  
Designer Joshua Turner / Neil Robinson  
Scale 1:25 A3

Bullock & Bosson / BFM Staffs

Tel: B&B: 01782 747222 / BFM: 01782 818567

Fax: N/A

[www.bullockandbosson.com](http://www.bullockandbosson.com) / [www.bfmstaffs.co.uk](http://www.bfmstaffs.co.uk)

This drawing is protected under copyright. At no time must any part of this drawing be reproduced and electronically processed, duplicated or distributed in anyway (print, photocopy or any other procedure) without the written permission of the author.